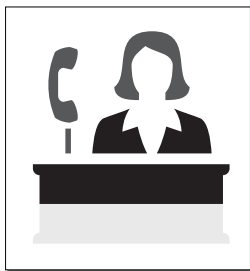
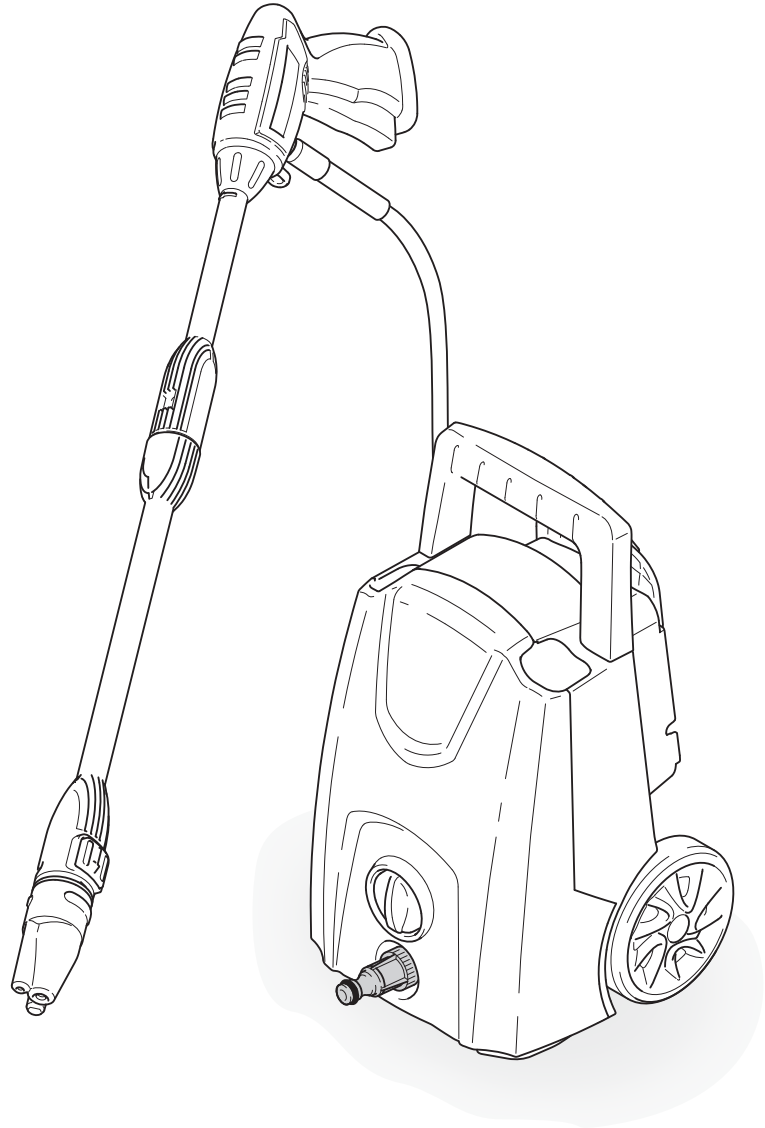




**BLUE[®]
CLEAN**

Instruction Manual

Model Speedy Wash



Customer Help Line
1-866-235-5112



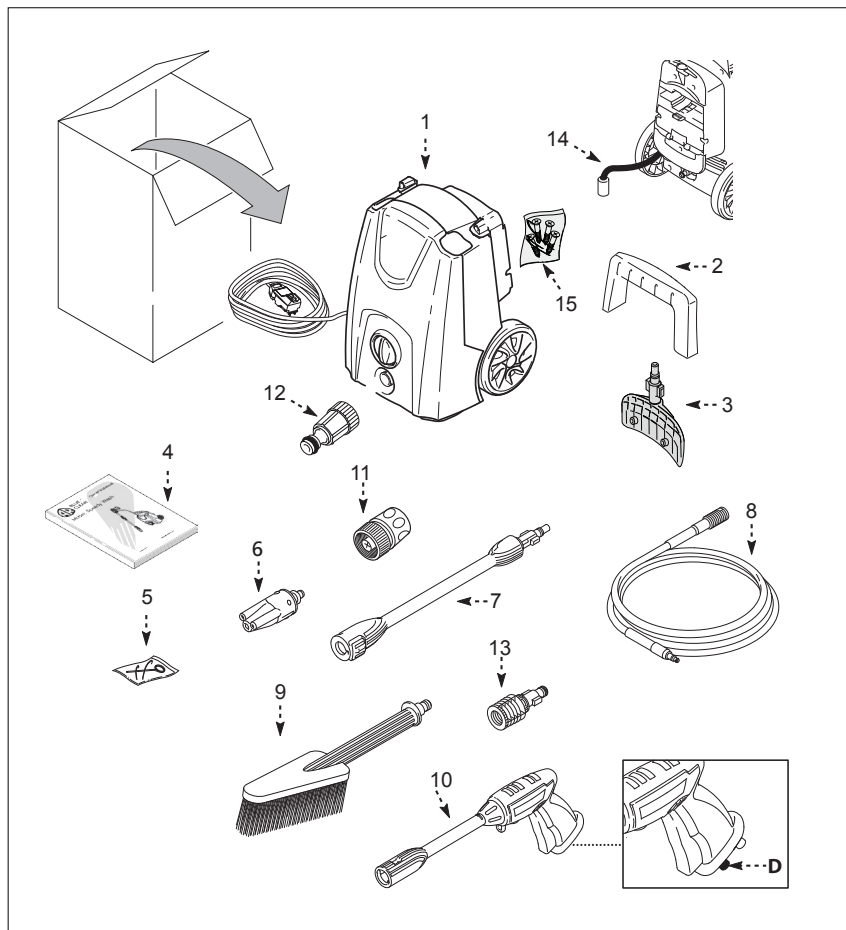
WARNING: To reduce the risk of injury, the user must read and understand the instructions before using this product.

SAVE THESE INSTRUCTIONS FOR FUTURE REFERENCE

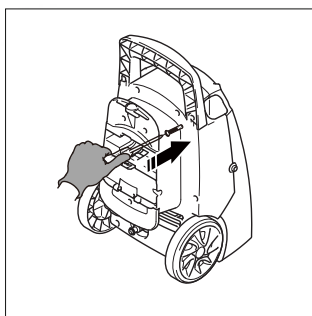
QUICK START GUIDE

PACKAGE CONTENT:

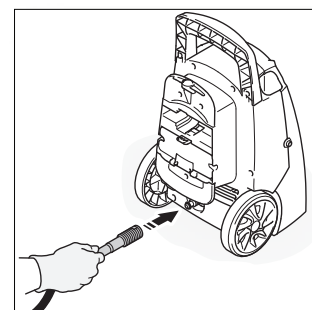
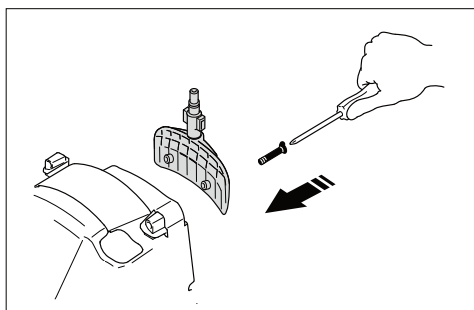
1. Power washer unit
2. Handle attachment
3. Top cord holder
4. Manual
5. Nozzle cleaning wire - taped to the manual for safe keeping
6. 3 in 1 spray nozzle
7. Lance
8. High pressure hose
9. Fixed brush
10. Spray gun (D shows trigger lock button)
11. Garden hose adapter (blue/black)
12. Quick connect adapter (clear)
13. Fixed brush handle adapter
14. Detergent suction tube
15. Screws (four)



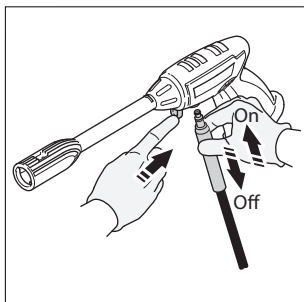
Required Tool



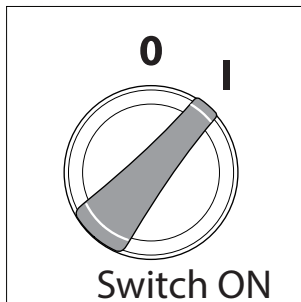
1. Screw handle onto washer. 2. Screw cord holder onto washer.



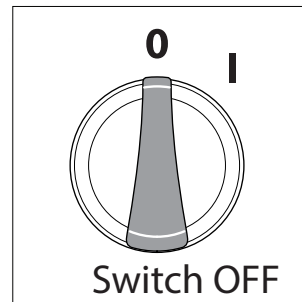
3. Connect high pressure hose to back of washer.

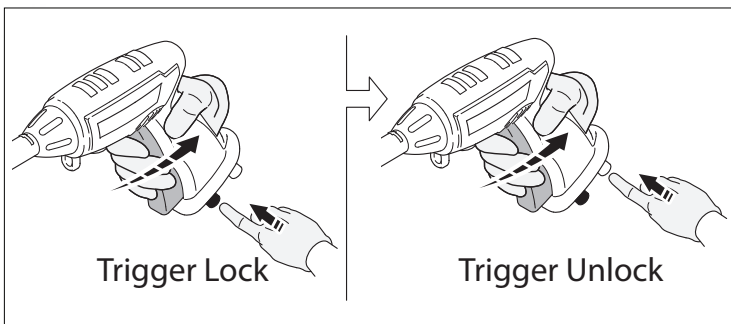


4. Attach high pressure hose to washer.

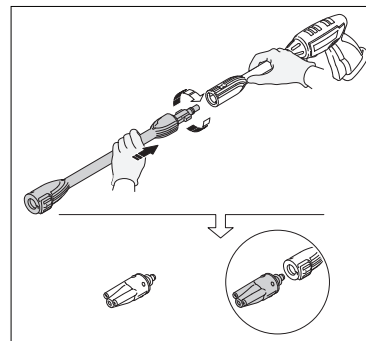


5. Switching washer in the ON (I) and OFF (O) positions. Always make certain washer is OFF when changing attachments and not in use.

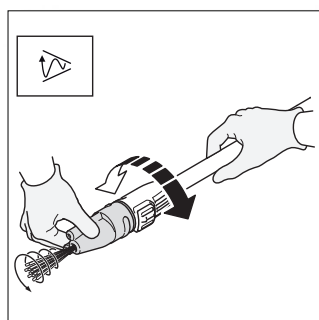




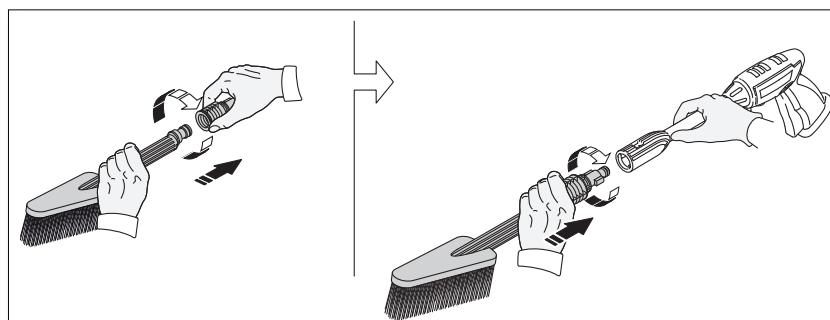
6. Press front button to lock the spray gun and press the back button to unlock it. Always make sure trigger is in the lock position when not in use.



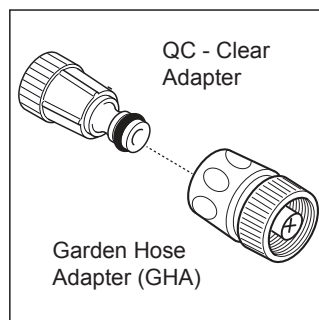
7. Connect lances to spray gun, insert lance into spray gun, push together and at the same time twist clockwise to lock in place. Removing push together and twist counterclockwise then pull apart. Press nozzle into lance and turn clockwise it will lock with a "click".



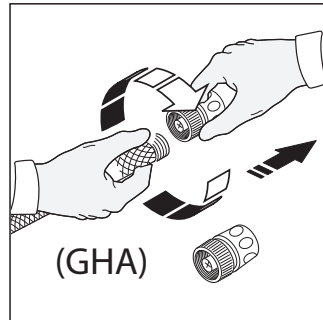
8. Turn nozzle head to change the spray pattern.



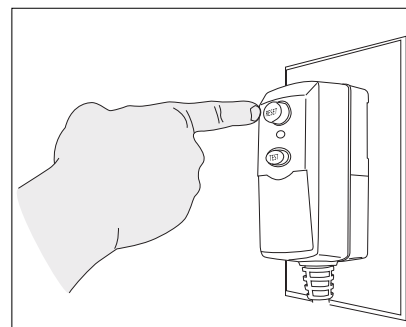
9. Attach the fixed brush adapter to the brush handle. Connect brush the same as the lance.



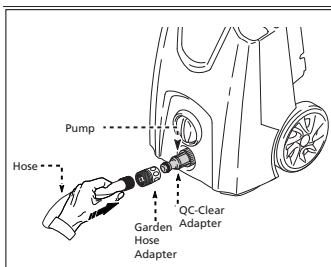
10. Clear QC adapter attaches to power washer, GHA attaches to garden hose.



11. Attach GHA to the end of the garden hose.



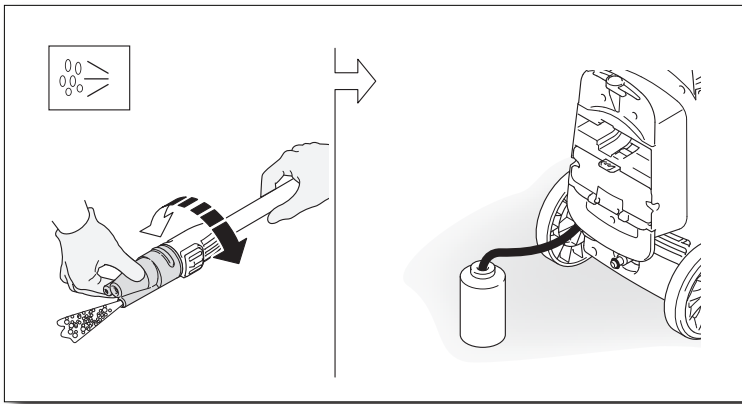
12. Plug machine into a grounded outlet, push reset button.



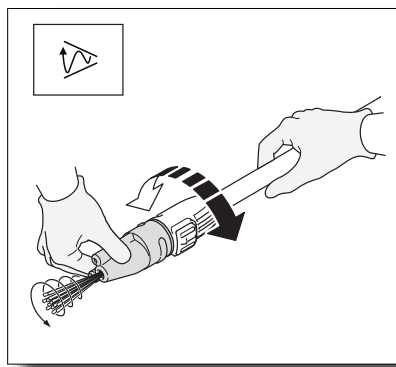
13. Connect clear quick connect adapter to washer. Connect GHA to garden hose. Connect GHA to Clear adapter by pushing together.



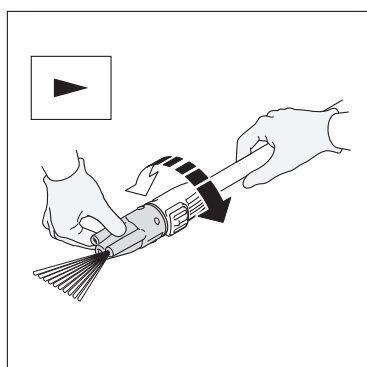
14. Point spray gun in a safe direction and squeeze the trigger on the spray gun until there is a steady stream.



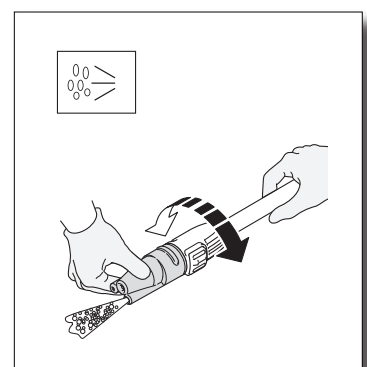
15. Select detergent setting on nozzle. Fill detergent into the detergent bottle, insert the detergent suction tube in to the bottle.



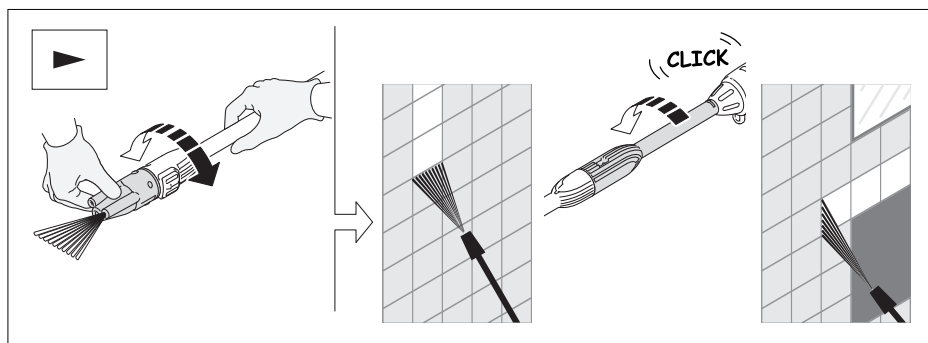
16. Select turbo setting for hard, uneven services like concrete and patio blocks.



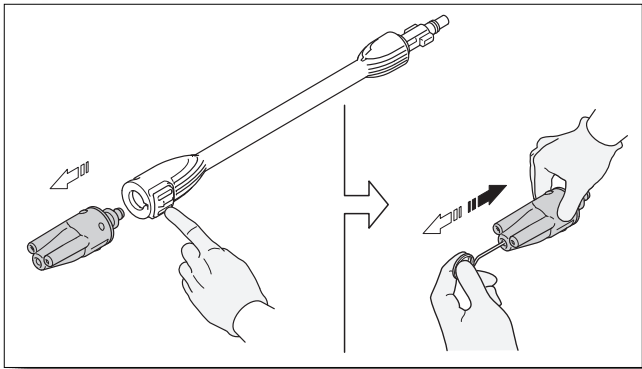
17. Select fan spray for cleaning windows, patio furniture, etc.



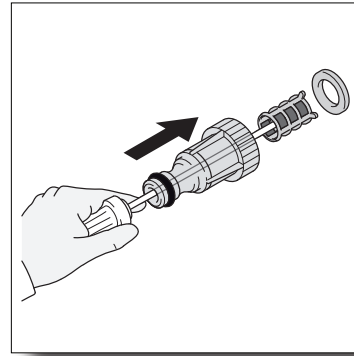
18. Select detergent setting to use the detergent to help clean hard to clean surfaces and additional chemical is needed to break up the dirt.



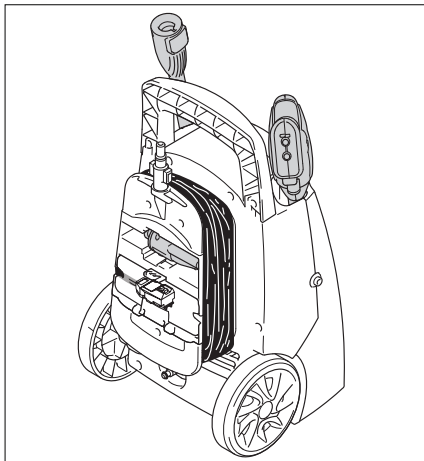
19. Using the fan spray keep spray about 5' from the surface and at a 45° angle. It is best to test small area to prevent causing damage.



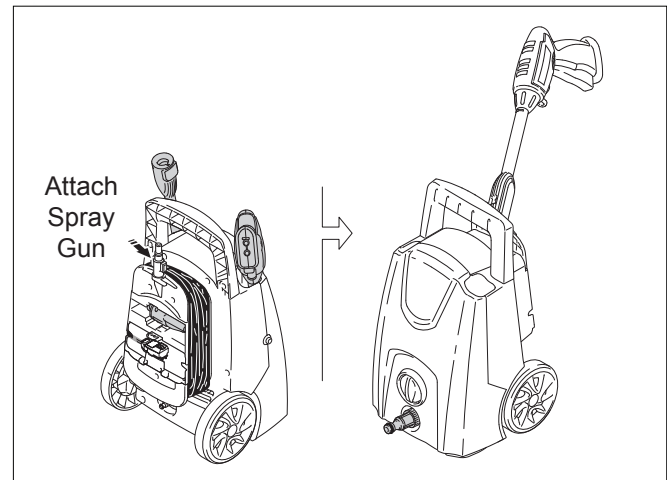
20. Remove nozzle and clean out tip by using a unbent paper clip or the nozzle cleaner that came with the washer. This helps to prevent particles from blocking and damaging the nozzle.



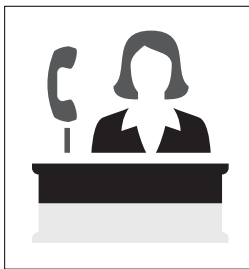
21. Clean the clear plastic quick connect adapter screen. Using a pen or pencil insert at tip to push out the screen filter. Rinse out thoroughly and replace.



22. Place accessories into compartments for easy storage.



23. Attach spray gun to the quick connect fitting on the top cord holder on the back of the washer.



Customer Help Line
1-866-235-5112



WARNING: To reduce the risk of injury, the user must read and understand the instructions before using this product.

TABLE OF CONTENTS

| | | | |
|--|----|-------------------------------------|----|
| Quick Start..... | 2 | Operating Tips and Maintenance..... | 13 |
| Specifications | 6 | How to Clean | 15 |
| Limited Warranty | 6 | Storage | 16 |
| Warranty Process | 6 | Pump Saver..... | 17 |
| Introduction..... | 7 | Replacement Parts | 18 |
| Safeguard, Warnings & Safety Tips..... | 7 | Troubleshooting and FAQ..... | 19 |
| Package Content..... | 9 | | |
| Unpacking & Assembly..... | 9 | | |
| Operating Instructions | 12 | | |

SPECIFICATIONS

| Model | Max PSI (lbs/sq/in) | Max GPM (gal/per/min) | Max Temp | Volts | Amps | Weight (lbs) |
|-------------|------------------------|--------------------------|----------|-------|------|--------------|
| Speedy-Wash | 1,600 | 1.45 | 122° F | 120 | 14 | 18 |

LIMITED WARRANTY

This product is under warranty to the original retail consumer against defects in material and workmanship for a period of 1 (one) year and is a complete “bumper to bumper” warranty including the spray gun, the high pressure hose and all accessories from the date of purchase. The warranty is not transferable or assignable. This warranty covers replacement parts. This limited one year warranty applies only to products used in consumer applications and is void in rental or any commercial application. Reasonable care must be used in conformity with operation and maintenance instructions in the owner’s manual and quick start guide. Failure to follow these instructions will void this warranty.

WARRANTY PROCESS

Keep your original receipt of purchase in case of warranty claim.

If your power washer develops a problem, contact Customer Service by one of the two methods:

1. Send an e-mail to info@arblueclean.com with your name, address the model of your power washer, when and where you purchased it. Describe in the e-mail the problem you are having. A Customer Service person will contact you to resolve the problem.
2. Call our toll-free number at 1-866-235-5112. Customer Service is available Monday - Friday 8:00 a.m. to 5:00 p.m. Central Standard Time (CST). The Customer Service person will work with you to fix the problem.

If the power washer needs to be returned for repair, shipping costs to the company must be paid by the customer. A **Return Merchandise Authorization (RMA) Number** will be issued for the return. Upon receiving the power washer, the company will repair or replace the unit. We will send unit back to customer at no charge.

Please note: Power washers sent to the company **without an RMA Number will NOT be accepted** and shipped back at the expense of the sender.

INTRODUCTION

Congratulations on the purchase of your **BLUE CLEAN POWER WASHER!**

Your **BLUE CLEAN POWER WASHER** is a power tool in every sense of the word that may be used outside your house and in. It is one of the finest most powerful home-use power washers in the marketplace today.

Please familiarize yourself with the following assembly, operating and safety information. Read this manual before using the power washer. Failure to follow these instructions could cause personal injury, property damage, or both. Save this manual for other users to read prior to using the power washer.

If you have any questions about or problems with your power washer please call our toll-free number **1- 866-235-5112** and talk with our Customer Service Support Team at AR North America Inc. We are available to talk with you Monday through Friday from 8 a.m. to 5 p.m. Central Standard Time (CST). We can help you with questions regarding operation, warranty, replacement or optional parts, or contact us at info@arblueclean.com.

For more information on the **BLUE CLEAN POWER WASHERS** go to www.arblueclean.com. Power washers, parts, and accessories can be ordered online 24 hours a day, 7 days a week for your convenience.

SAFEGUARDS, WARNINGS AND SAFETY TIPS



- To avoid personal injury and/or damage to property and to maximize your power washing experience, carefully follow all of the safety tips, instructions, warnings and safeguards and become familiar with all of the controls. Be sure you know how to quickly bleed off the pressure from all parts of your power washer, and how to turn off the power washer .
- This power washer conforms to CSA and other safety and consumer standards. Do not modify or rebuild any part of your power washer.
- Do not use your power washer when you are under the influence of alcohol or drugs. Use this power tool carefully and only when you are alert .
- Watch your balance and footing while using your power washer. Surfaces become slippery when wet and are extra slippery when using a detergent or cleaner.
- Never operate the power washer in bare feet, sandals, or open-toed shoes.
- When using the power washer near children make sure they are closely supervised by an adult to avoid injury. Never let a child use the power washer.
- Keep fingers, hands, feet and any part of your body clear of the stream of high pressure water. The powerful spray can cause blindness or blast holes in the skin. It can break a window if you are too close when you pull the trigger on the spray gun .
- Always wear eye protection to prevent injury to eyes when operating the power washer.
- To avoid mishaps or injury, always use the trigger safety lock when not using the power washer even if the spraying stops for a moment.
- The power washer is equipped with a Ground Fault Circuit Interrupter (GFCI) which greatly reduces the chance of electric shock while the unit is in use.
- Point the spray gun in a safe direction when beginning a power washing session.
- When first using the spray gun, hold the spray gun and lance with two hands when pulling the trigger until you get used to the “kick back” from the spray gun (one hand to pull the trigger and the other to stabilize the gun assembly).

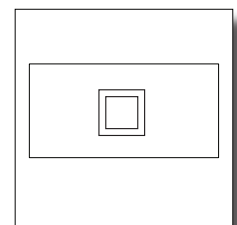
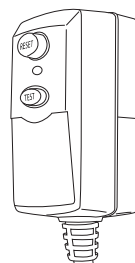
- When you press the power switch to turn off the power washer, water pressure may remain in the system. To discharge the pressure, point the spray gun in a safe direction and pull the trigger.
- Never spray flammable liquids.
- Never use the power washer in areas that contain combustible dust, liquids or vapors.
- Avoid contact of the pressure hose with sharp objects and examine the hose regularly. Replace if damaged. Due to the high pressure involved, it cannot be repaired if cut or damaged.
- Only use detergent specifically formulated for power washers and follow instructions on the detergent's label. We have a selection of power washer detergents to choose from. Go to **www.arblueclean.com** for more information and to order the detergents. Power washer detergents are also available at your local hardware store.
- Protect eyes, lungs, and skin from exposure to detergent. Dish or laundry soap is too thick and will clog the nozzle of your detergent tank.
- **IMPORTANT:** Store the power washer indoors to prevent the water in the unit from expanding under freezing conditions. When the water freezes and expands, your power washer will be damaged and become inoperable. Or, if storing outdoors, it is recommended you use Pump Saver. Pump Saver can be purchased on our website: **www.arblueclean.com**. See details in the Pump Saver section of this manual.
- Never use hot water with your power washer. It will overheat and damage the high pressure pump.
- Never leave the power washer unattended while it is powered "on".
- Always turn the water supply "on" before turning the power washer power to "on". Running the pump dry will cause damage to the internal components.
- Never use a water supply to your power washer that exceeds 150 psi maximum.
- Never disconnect the high pressure hose from the power washer while the system is pressurized.
- Never permanently engage the trigger mechanisms on the spray gun.
- Never operate the power washer unless all components are properly and securely connected.
- Never allow the power washer pump to run for more than one minute, after you have turned off the water supply. This can cause the motor and pump to overheat and fail.
- Never use lances or other parts that have not been supplied with your power washer.
- Never use an extension power cord since it defeats the effectiveness of the GFCI and increases the chance of electrocuting the operator.
- Never spray any electrical outlet with your power washer.
- Inspect the power cord before using. Do not use it if it is damaged.

Servicing of a Double-Insulated Appliance

In a double-insulated product, two systems of insulation are provided instead of grounding. Grounding means are not provided for a double-insulated product, nor should grounding means be added to the product.

Servicing a double-insulated product requires extreme care and knowledge of the system, and should only be done by qualified service personnel.

Replacement parts for a double-insulated product must be identical to the original parts. A double-insulated product is marked with the words "Double Insulation" or "Double Insulated". Product may also be marked with symbol shown here.

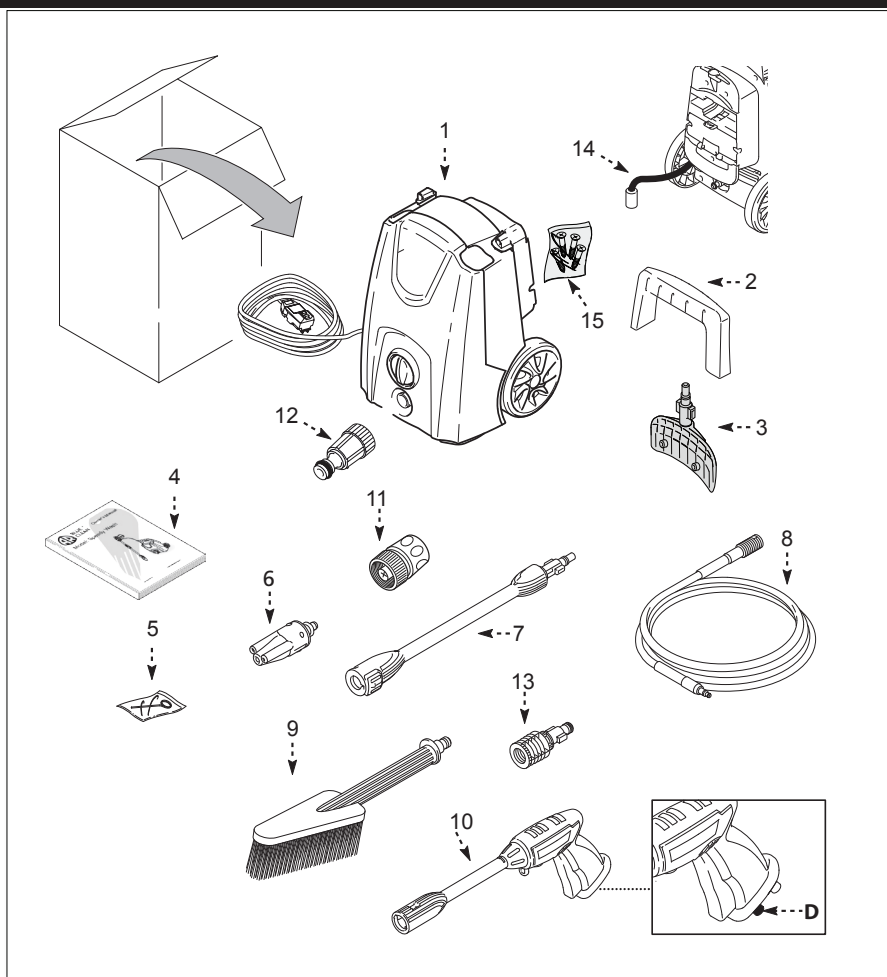
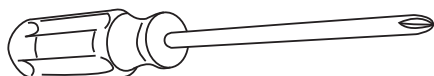


Double Insulated Product

PACKAGE CONTENT:

1. Power washer unit
2. Handle attachment
3. Top cord holder/
4. Manual
5. Nozzle cleaning wire - taped to the manual for safe keeping
6. 3 in 1 spray nozzle
7. Lance
8. High pressure hose
9. Fixed brush
10. Spray gun (D shows trigger lock button)
11. Garden hose adapter (blue/black)
12. Quick connect adapter (clear)
13. Fixed brush handle adapter
14. Detergent suction tube
15. Screws (four)

Note - tool(s) required for assembly
Philip Screwdriver:



UNPACKING & ASSEMBLY

- After unpacking the **BLUE CLEAN POWER WASHER**, lay out the parts and accessories. Familiarize yourself with the parts in the package by comparing them to those listed on the "PACKAGE CONTENTS" page.
- The **BLUE CLEAN POWER WASHER** requires some minor assembly, handle and top cord holder/detergent suction tube. Slide handle from front of the washer toward the back and fasten with two (2) screws (**Fig. 1**). Then attach the top cord holder to the back of the washer using the two (2) remaining screws. (**Fig. 2**).

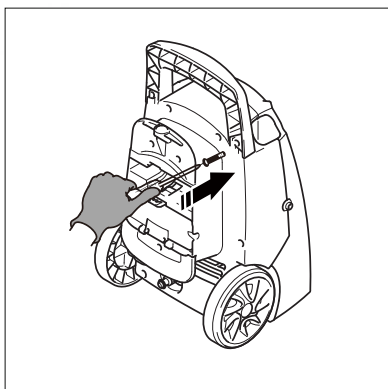


Fig. 1

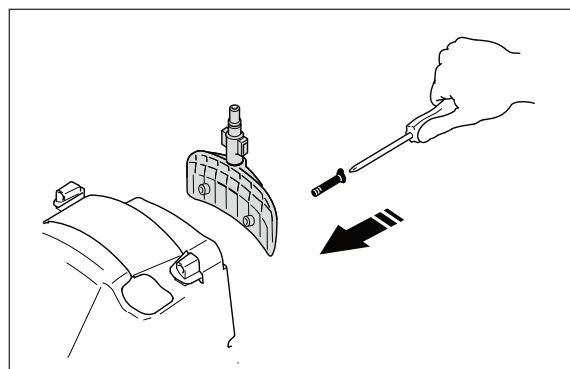


Fig. 2

High Pressure Hose

- Connect high pressure hose to the outlet filter (**Fig. 3**). Make sure the connection clicks tightly in place. Failure to properly connecting the high pressure hose will result in the hose slipping or popping off immediately upon turning the unit on. Can also cause leaking.

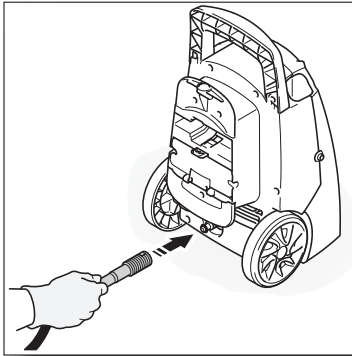


Fig. 3

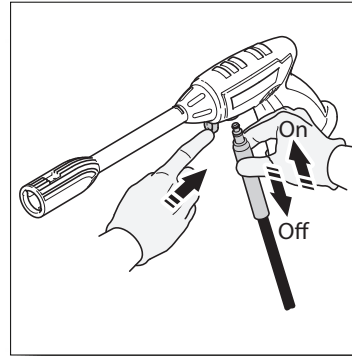


Fig. 4

- Connect the other end of the high pressure hose to the spray gun by inserting the silver metal tip of the high pressure hose into the fitting under the trigger guard. It will lock into the spray gun with a “click” (**Fig. 4**). Confirm the hose is locked into the spray gun by pulling slightly on the hose. The hose is now securely attached to the spray gun.
- To release the hose from the spray gun, press the thumb tab on the underside of the spray gun toward the trigger guard. The hose will slide out from the connection.

Spray Gun

- To lock the trigger of the spray gun, make sure power is off (O) (**Fig. 5**) aim the spray gun away from you and push the lock button up, (**Fig. 6**) after doing so, squeeze or pull the trigger

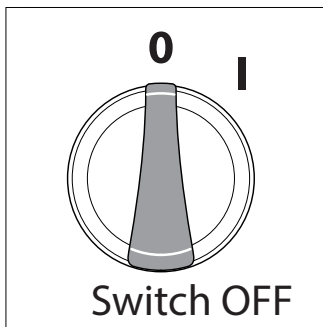


Fig. 5

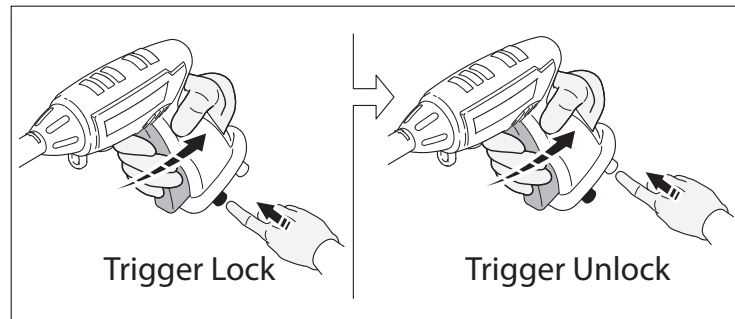


Fig. 6

to make sure it is locked and will not move. Get in the habit of leaving the lock button in the “locked” position when the power washer is not in use. This ensures the gun is in “safe” mode until it is ready for use.

Lances and Attachments

- While the spray gun trigger is in the locked position, insert the lance into the spray gun by inserting, pushing together and turning clockwise simultaneously (**Fig. 7**). To remove push together and turn counter clockwise. Push the safety lock button to lock the trigger when changing the lances to ensure that they do not accidentally eject with force during removal.

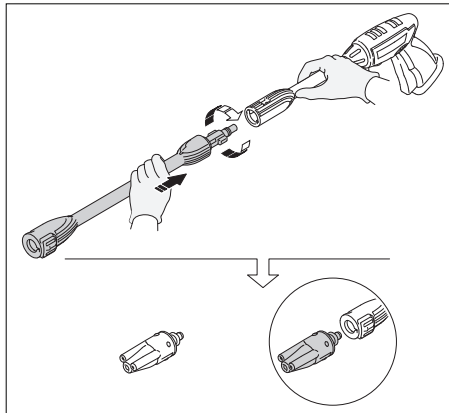


Fig. 7

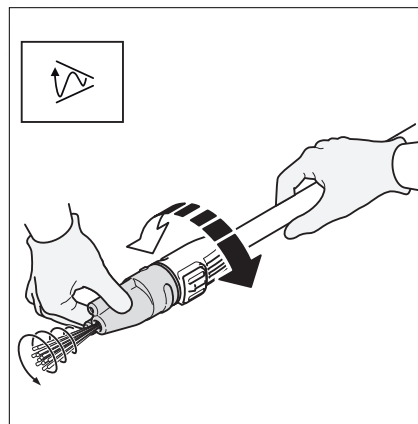


Fig. 8

- 3 in 1 nozzle installation/operation: Press the nozzle head into the end of the lance and turn clockwise (**Fig. 8**). It will lock into the lance with a “click.” Rotate the nozzle head clockwise to change the spray pattern to adjustable spray (brass nozzle), turbo spray (white nozzle) or low-pressure detergent spray (black nozzle).
- Fixed brush installation/operation: Attach the fixed brush adapter to the brush handle. Press the adapter on to the handle and turn clockwise to lock the adapter on the handle. Insert the brush handle adapter into the spray gun. Press the brush handle into the gun and turn clockwise to lock the brush into the gun (**Fig. 9**).

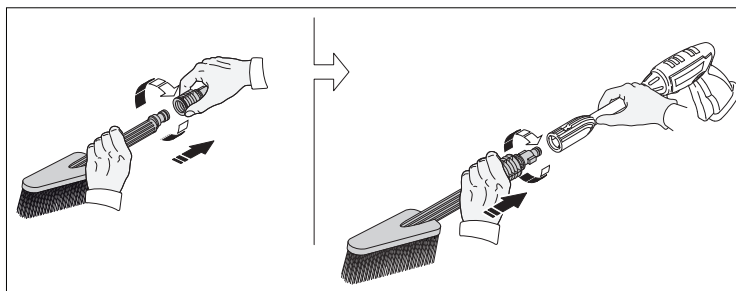


Fig. 9

Garden Hose Adapter

- The garden hose adapter (GHA) and quick connect filter. Are made up of two separate pieces. (1) A clear plastic adapter with a screen filter (about 3 inches long) and (2) a blue/black collar attachment (**Fig. 10**).

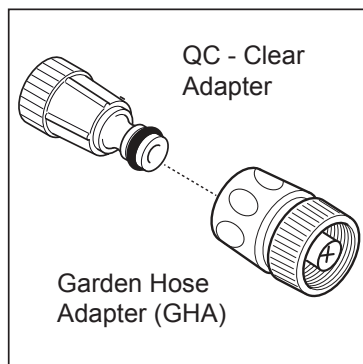


Fig. 10

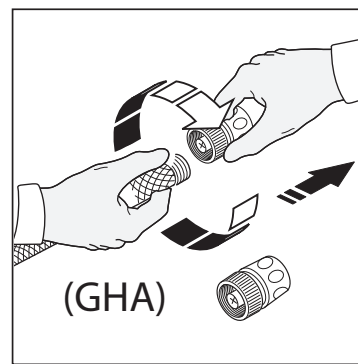


Fig. 11

- Attach the garden hose adapter to the end of the garden hose (**Fig. 11**).
- You have now completed the assembly of your **BLUE CLEAN POWER WASHER** and are now ready to begin using your electric power washer. Read and observe all safety instructions.

OPERATING INSTRUCTIONS

- Make sure the “ON/OFF” switch is in the “OFF” position. The power switch has international symbols for ‘on’ and ‘off’: On (|) (**Fig. 12**) Off (O) (**Fig. 13**).
- Unwind the power cord completely and plug the GFCI into a grounded 120 volt outlet. Press the ‘reset’ button on the GFCI box (**Fig. 14**). The indicator window should show a red color. This must be done each time the unit is plugged in.

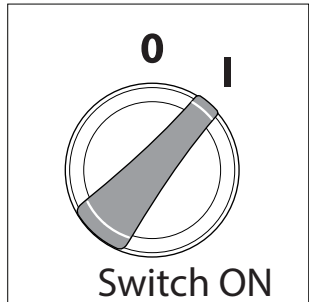


Fig. 12

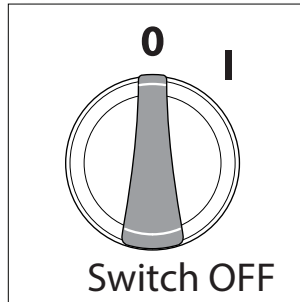


Fig. 13

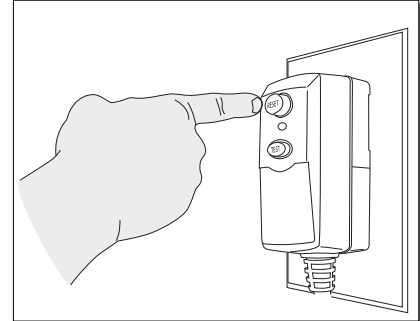


Fig. 14

- Install the garden hose adapter (GHA) and quick connect filter. First, remove the plastic shipping cover on the water inlet on the front of the power washer. Attach the clear plastic adapter by screwing it into the water inlet (**Fig. 15**).
- Connect garden hose. Hand tight is fine. Next screw on the blue/black collar attachment to your garden hose (**Fig. 16**). Slide the blue/black collar onto the clear adapter, it will “click” into place. The water is now connected to your power washer.
- Turn on the water supply at the faucet.

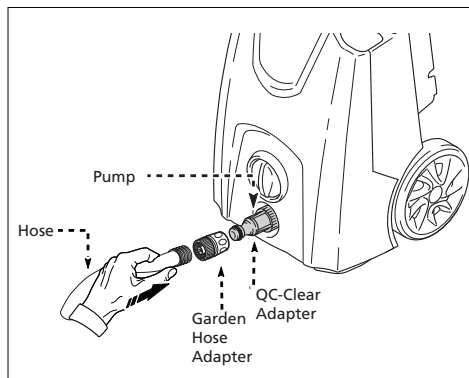


Fig. 15

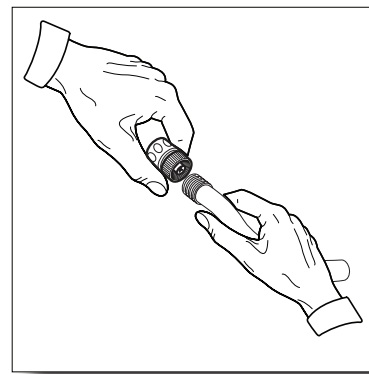


Fig. 16

- Release the safety lock button on the spray gun by pressing the safety lock button from right to left. While pointing the spray gun in a safe direction, squeeze the trigger on the spray gun until there is a steady stream of water, letting the water and air out of the hose. (**Fig. 17**)

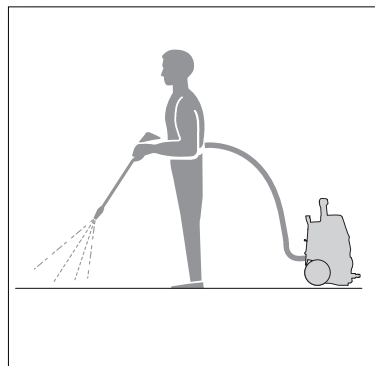


Fig. 17

- Turn the 'ON' knob. The motor and pump should now be ready to run and provide a powerful spray.
- Pull trigger on spray gun to activate the total stop system turning the machine on by pulling the trigger and machine will turn off when releasing the trigger.

Detergent Operation

- Place the detergent suction tube into a container (not included) with detergent. Turn nozzle head to the detergent setting - black nozzle opening. **(Fig 18).**

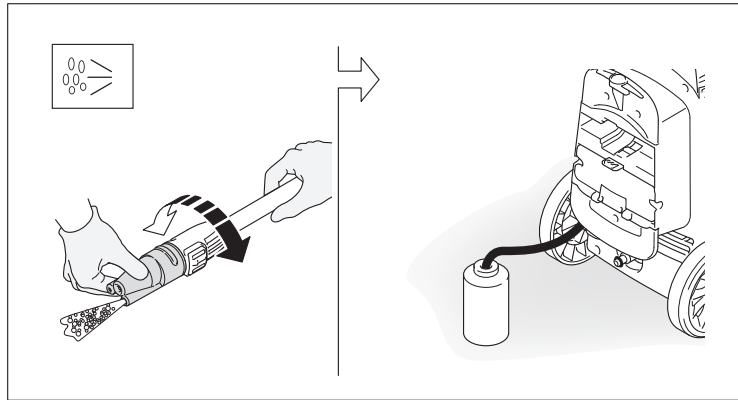


Fig. 18

- The detergent setting creates low pressure spray which activates the detergent suction tube. The mix ratio is 10:1 or 10 parts water to 1 part detergent.
- The detergent used must pour like water and be concentrated to allow for the 10:1 mix ratio.
- For best results use Pressure Washer Detergents which can be purchased at your local hardware store. Use biodegradable detergent.

OPERATING TIPS AND MAINTENANCE

How to Avoid Damaging Surfaces

- Damage to surfaces being cleaned occurs because the impact force of the water pressure exceeds the durability of the surface. Bare wood can be penetrated; paint can be peeled off, etc. You can vary the force of your power washer by controlling:
 - the fan pattern of the nozzle (when using the adjustable nozzle)
 - the angle of the water spray to the surface being cleaned
 - the distance of the nozzle from the surface being cleaned
- Never use a narrow high pressure stream of water from the lance on soft surfaces susceptible to damage.

Nozzle Functions

- Turbo Setting: **(Fig. 19)** The turbo nozzle has a pulsating, rotating flow of high pressure water spray. Use on hard, uneven surfaces like concrete and patio bricks. Place the nozzle at a forty five degree angle and about a foot away from the surface. Adjust as needed for the best results.

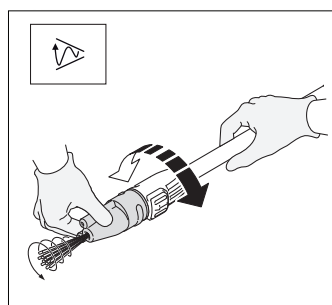


Fig. 19

- Fan Setting: **(Fig. 20)** Use the fan spray when cleaning windows, patio furniture, siding etc. Place the nozzle approximately four to five feet away from the surface with the nozzle at a forty five degree angle. Squeeze the trigger and vary the fan spray pattern and angle until optimum cleaning efficiency is achieved. **(Fig. 21)**

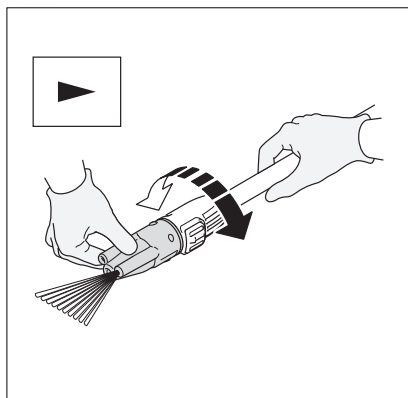


Fig. 20

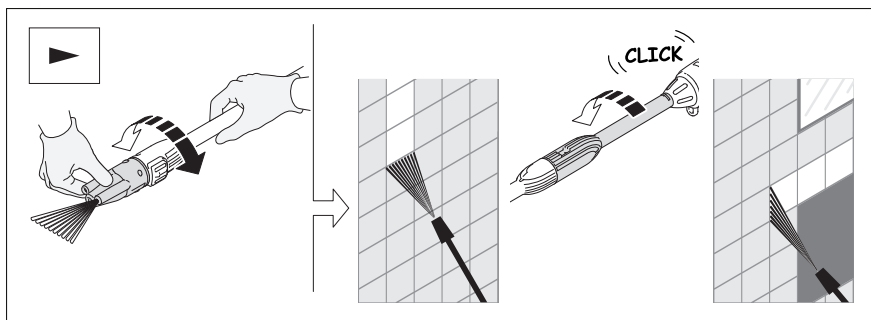


Fig. 21

- Soap Setting: **(Fig. 22)** Use this setting when using detergent to help clean the hard to clean surfaces and additional chemical is needed to break up the dirt.

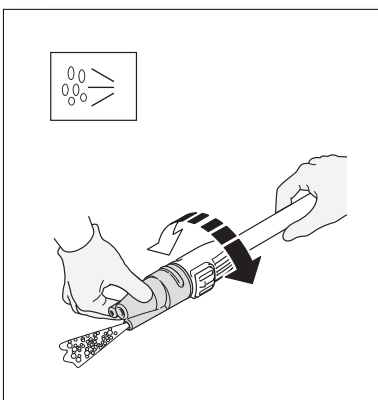


Fig. 22

Detergent Operation

- Use detergents designed for power washers. We offer four power washer detergents. They are Auto, Motorcycle, Boat and Universal. These can be purchased online at our website **www.arblueclean.com**. Hardware stores or home centers also have power washer detergents. The cleaning solution should be the consistency of water in order to prevent clogging your detergent nozzle.
- This system applies detergent under low pressure. The cleaning power of the detergents is enhanced when applied with low pressure; when time is allowed to penetrate and break down dirt and grime. The combination of low pressure and chemical action is very effective and can be better than scrubbing if applied properly. Always spray detergent on a dry surface, do not pre-soak area. Wetting the surface first dilutes the detergent and reduces its cleaning ability. Do not allow detergent to dry on surface. On vertical surfaces being cleaned, apply detergent to lower surfaces and work your way up to prevent detergent from causing streaks in the dirt and grime. Rinse detergent by power washing from bottom up for same reason.
- If a stain is particularly tough, it may be necessary to reapply the detergent and use a stiff bristled brush to scrub the stain. Subsequent power washing after brushing should successfully complete your cleaning job.

Fixed Brush Use

- Attach the fixed brush to help scrub surfaces to get them clean. Can be used on lawn

furniture, automobiles, RVs, motorcycle, boat etc.

- Use after applying soap to help get those tough spots, then use the fan spray nozzle to clean off the soap. Do not allow soap to dry on what you are cleaning which can cause the soap to dry and damage your property.
- Rinse out brush after use to keep it clean.

How To CLEAN

Cleaning Nozzles

- A clogged or partially clogged nozzle can cause significant reduction of water pressure coming out of the nozzle and/or cause the unit to pulsate while spraying.
- Turn off the unit.
- Turn off the water supply to the unit.
- Relieve any pressure trapped in the high pressure hose by squeezing the trigger 2-3 times, and then lock the spray gun by pushing the lock button from left to right.
- Take off the nozzle. Using the nozzle tip cleaner provided (or an unfolded paper clip), insert the wire into the nozzle hole and move back and forth until debris is dislodged (**Fig. 23**). Back flush water through the nozzle using garden hose and highest pressure available (either standard water nozzle or use your thumb over the nozzle to create water pressure for back flush).

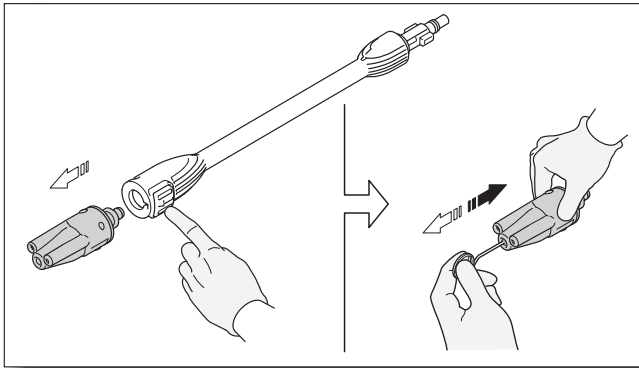


Fig. 23

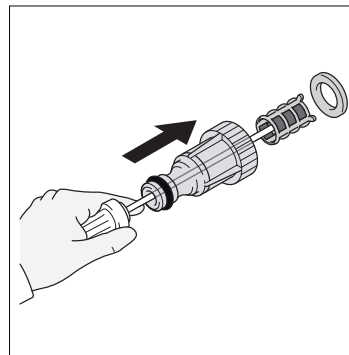


Fig. 24

Tips

- If you hear the motor run intermittently when the trigger is not being squeezed, that is normal. The pump is priming itself so it is ready to operate when the trigger is squeezed. Turn off the power washer if not being used after five minutes.
- The o-rings on the bayonet end of the lances and attachments should be cleaned regularly and lubricated with non-water soluble grease.
- The screen inside the clear adapter should be cleaned periodically. Insert a pen or pencil in small hole at the end of the adapter. The screen filter will slide out (**Fig. 24**). Rinse it with clean water, and then place it back in the adapter. Keep the nozzle cleaning wire that is taped to this manual, to unclog the nozzle on the lance. If you lose the cleaning wire an unbent paper clip will work.

STORAGE

- When your power washing session has been completed.
 1. Turn water supply off.
 2. Disconnect the garden hose.
 3. Pull the trigger on the spray gun for 30 seconds twice to release any remaining water pressure
 4. Turn off the power switch located on the front of the power washer. Off (O)
 5. Unplug the power washer.
 6. Disconnect the high pressure hose from the back of the machine and the bottom of the spray gun.
 7. Remove lance and/or attachment from the spray gun.

Do not allow the power washer to run with no water flowing through it.

- Place accessories in compartments built into the power washer. **(Fig. 25)**

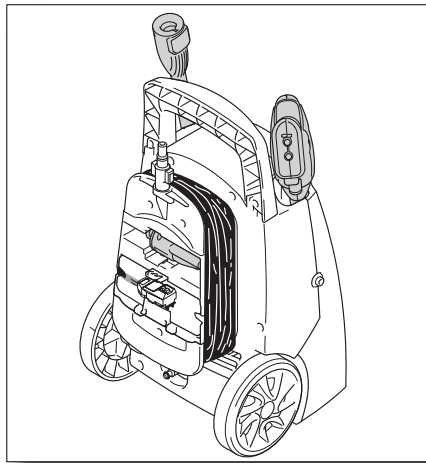


Fig. 25

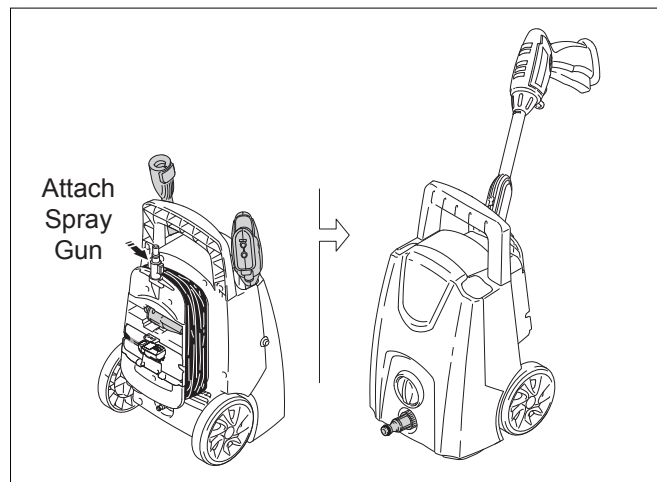


Fig. 26

- Store power washer and accessories in an area that does not reach freezing temperatures. Do not store near furnace or any sources of heat, it may dry out the pump seals.
- For easy handling, attach the spray gun to the quick connect fitting on the top cord holder on the back of the washer. **(Fig. 26)**
- **DO NOT store the power washer where it is exposed to freezing temperatures unless you use Pump Saver.** It is recommended that you use Pump Saver for storing in freezing temperatures. Freezing will damage the pump unless Pump Saver is added to the power washer. If not using or if storing your power washer for more than one month, run Pump Saver through it. See the section on Pump Saver for more information.
- Pump saver (PW64511) is available online at www.arblueclean.com.
- Store the power washer **indoors** if not using Pump Saver and you live in a cold climate area to prevent freeze damage to the pump.

PUMP SAVER

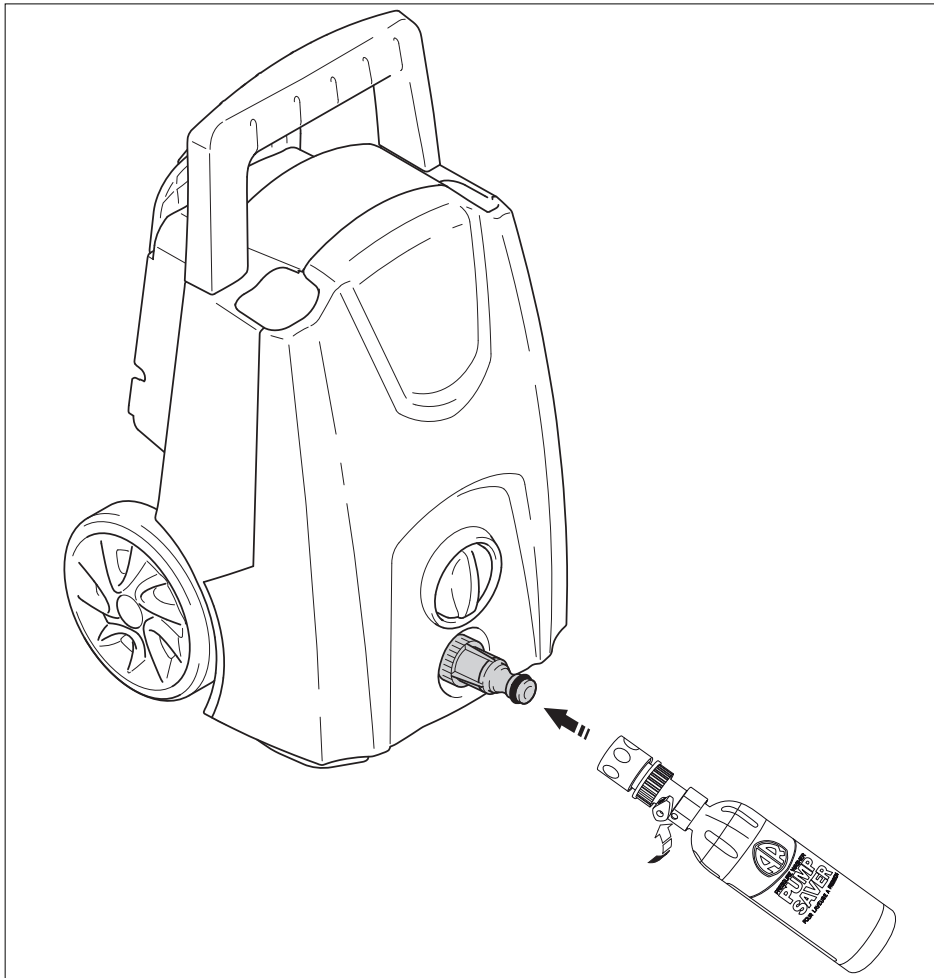
Pump Saver is a product that protects and prolongs the life of the pump. This will keep the internal parts of the pump lubricated and protected from freezing while being stored in ALL climates. It also assists with protection from internal corrosion. The Blue Clean part # is: PW64511 (16oz. bottle).

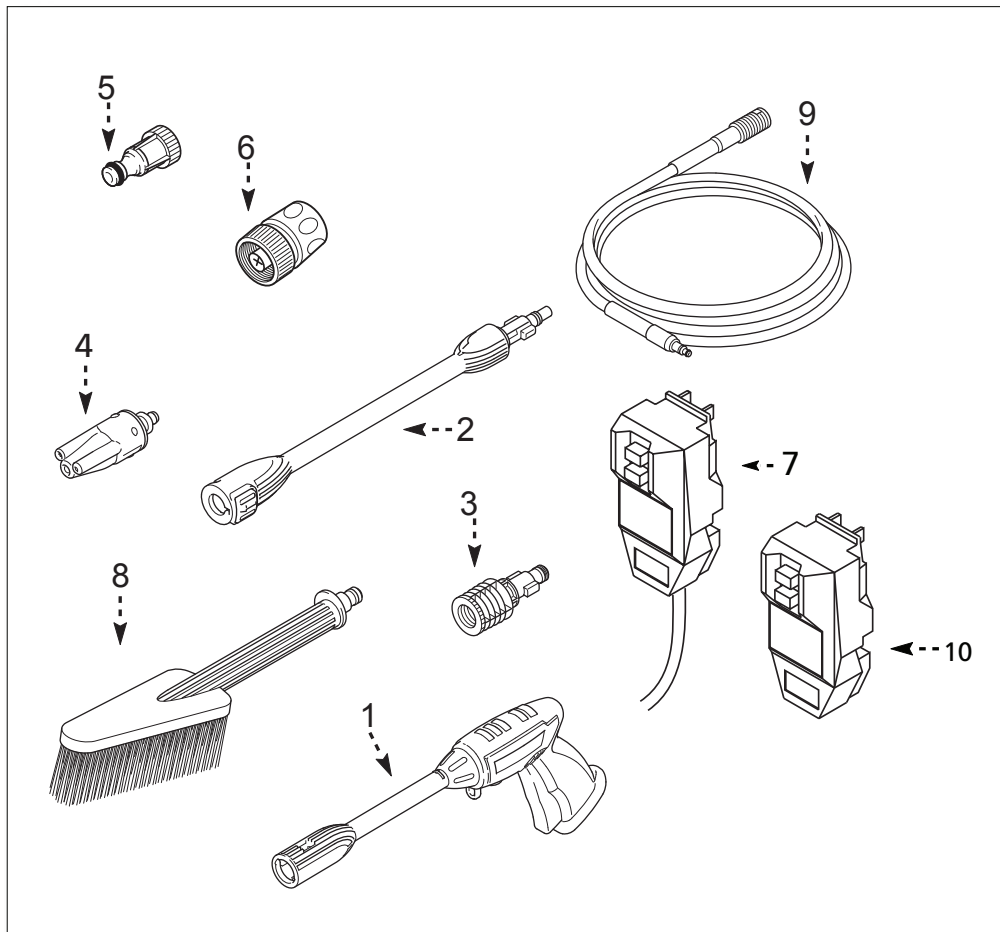
Order online at www.arblueclean.com

Pump Saver Instructions

Follow the previous storage instructions for your power washer. To prevent staining, protect the surface under the power washer from any excess fluid. Wear eye protection when using this product.

1. Turn off your power washer.
2. Disconnect garden hose.
3. Shake the bottle well before connecting to the power washer.
4. Screw the garden hose adapter to the Pump Saver Bottle.
5. Click onto pump inlet (clear quick connect filter).
6. Turn the valve on the bottle to the open position.
7. Turn the power washer on. Turn the power washer off as soon as the Pump Saver fluid begins to exit the water outlet - nozzle.
8. Turn the valve on the bottle to the off position and remove the Pump Saver bottle valve assembly from the power washer.





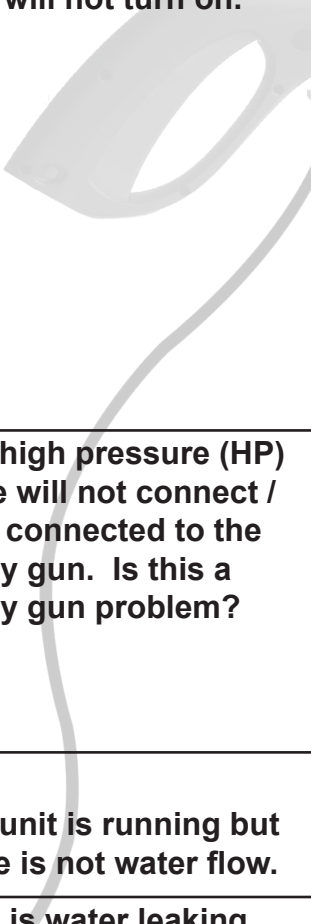
REPLACEMENT PARTS

| Pos. | Description | Part Number | Qty. |
|------|--------------------------------------|----------------|------|
| 1 | Spray Gun (Blue) | PW3760851 | 1 |
| 1 | Spray Gun (Grey) | PW3760852 | 1 |
| 1 | Spray Gun (Orange) | PW3760853 | 1 |
| 2 | Extension Lance (Blue) | PW3761111 | 1 |
| 2 | Extension Lance (Grey) | PW3761112 | 1 |
| 2 | Extension Lance (Orange) | PW3761113 | 1 |
| 3 | Fixed Brush Adapter | PW40788 | 1 |
| 4 | 3 in 1 Nozzle | PW3761700 | 1 |
| 5 | Quick Connect Filter (clear plastic) | PW3082130 | 1 |
| 6 | Garden Hose Adapter (blue/black) | PW3082301 | 1 |
| 7 | Electric Cord w/GFCI | DX2731301100 | 1 |
| 8 | Fixed Brush | PW40787 | 1 |
| 9 | High Pressure Hose | PW3760870 | 1 |
| 10 | GFCI Assembly | PW2761401110-1 | 1 |

Pump Spare Part Kits

| | | |
|----------------------|-----------|---|
| Water Seals & Valves | PW3081290 | 1 |
| Pre-Assembly TSS | PW3082350 | 1 |
| O-Ring Kit | PW909104K | 1 |

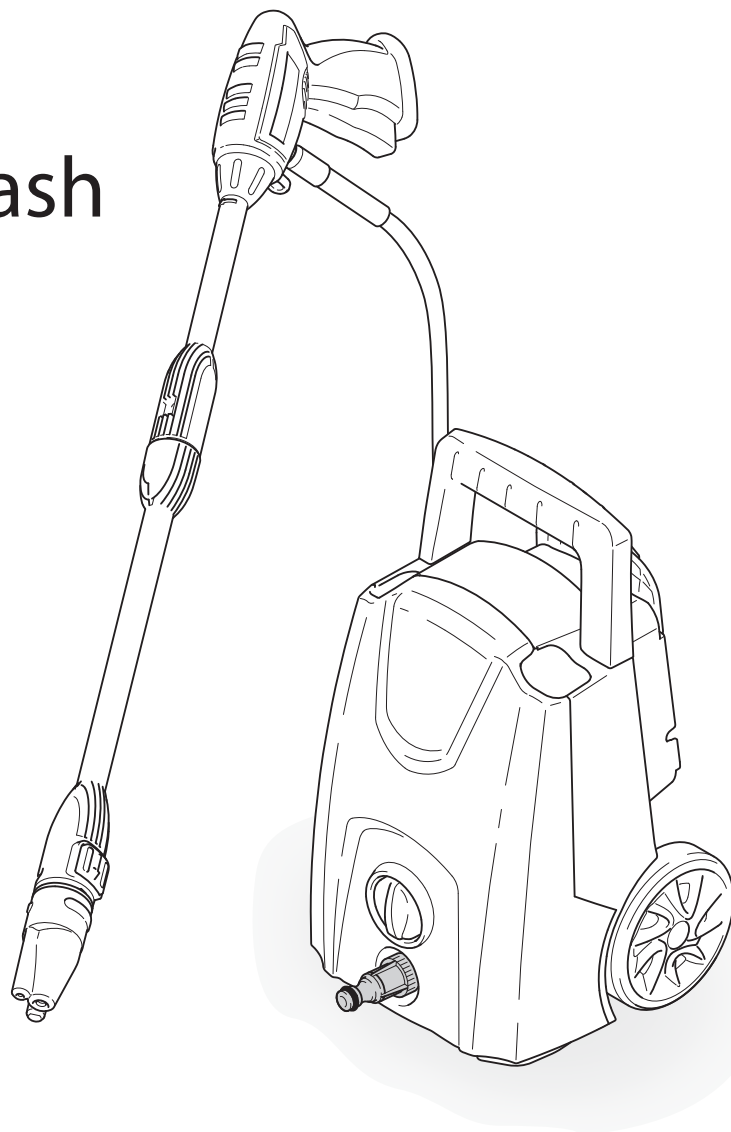
TROUBLESHOOTING AND FAQs

| | |
|--|--|
|  <p>Unit will not turn on.</p> | <p>Make sure the power washer is in the “OFF” position. Plug in the electrical cord to a grounded 120 volt outlet (no electrical extension cord should be used). If the electrical cord will not plug into your outlet, your electrical outlet is not properly grounded and should not be used. Use another electrical outlet. Press the reset button on GFCI power box. If the color of red is not visible in the little window on the GFCI, unplug and plug in again. Press reset, and look for the red color in the window, this should remain red in color. If the color is staying red, turn the power switch on the power washer to “ON”. Squeeze the trigger on the spray gun and try again.</p> <p>If this did not correct the problem, try plugging into another electrical outlet and repeat the above procedure. If it is still not working, call Customer Service at 1-866-235-5112.</p> |
| <p>The high pressure (HP) hose will not connect / stay connected to the spray gun. Is this a spray gun problem?</p> | <p>In most cases, the spray gun is not the problem. The problem is the rubber sleeve covering the fitting at the end of the high pressure hose. It has likely slipped up toward the metal tip. The fix: wiggle, twist and/ or pull the rubber sleeve down until the entire tip is visible plus an 1/8” of the metal fitting below the tip. Now try to insert the hose tip into the spray gun. It should “click” into place and will not come out until the hose is released by pushing in the lever on the underside of the gun. You may cut away the end of the sleeve with a sharp knife if unable to move the sleeve down. Be careful not to cut or puncture the hose.</p> |
| <p>The unit is running but there is not water flow.</p> | <p>Check the water source. Unclog the nozzle on the lance. (See nozzle cleaning instructions under “Cleaning nozzles”.) Or take off the lance and just spray out of the spray gun. This will indicate if the problem is with the lance.</p> |
| <p>Why is water leaking where the high pressure hose connects to the spray gun?</p> | <p>Make sure there is an o-ring at the end of the metal tip of the high pressure hose. If no o-ring is present, the connection between the hose and spray gun will leak. O-Ring Kits are available online at www.arblueclean.com or call Customer Service at 1-866-235-5112 to place an order.</p> |
| <p>I can’t remove the lance from the spray gun. What should I do?</p> | <p>All lances and the detergent tank are attached and removed from the spray gun in the same manner. Insert the quick-release end of the lance into the spray gun. Press the spray gun and lance together (about a 1/8”) and turn clockwise. The lance will lock in place. Remove the lance by reversing this procedure. Press the spray gun and lance together and turn counter clockwise. The lance will slide out. Or, hold the spray gun and lance in an upright position with the nozzle end on the floor. Push the whole assembly straight down to loosen the connection, and then follow the removal process again. You may also spray soapy water or a lubricant in the area where the lance connects to the spray gun.</p> |
| <p>The power washer turns on for 2 seconds, shuts off, and will not turn back on. Do I have a defective unit?</p> | <p>It sounds like your power washer is working just fine. When the water is connected, the accessories are assembled properly, and the power switch is turned on, the power washer may turn on for 1 - 2 seconds to prime the pump. It automatically shuts off and waits for the spray gun trigger to be pressed. When the trigger is pressed, water starts flowing through the pump. The water sensor in the pump “senses” the moving water and automatically turns the power washer on. Or, turn the power switch to off, hold in the trigger on the spray gun, so that you have a steady stream of water. While you are holding the trigger open on the spray gun, at the same time, turn the power switch on.</p> |



**BLUE[®]
CLEAN**

Model Speedy Wash



Cleaning and troubleshooting tips, manuals and other helpful information are available on our website. For parts and accessories for your Blue Clean Washer, visit www.arblueclean.com. Ordering is easy and all major credit cards are accepted.

A.R. NORTH AMERICA, INC.

Attn: Power Washer Warranty Department

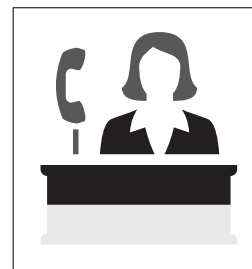
140 - 81st. Avenue NE, Fridley, MN 55432

Phone: 1-866-235-5112

Fax: 1-866-331-2762

Email: info@arblueclean.com

Website: www.arblueclean.com



Customer Help Line
1-866-235-5112

www.arblueclean.com