



**NORTH
AMERICA** [®]
When Quality Matters

**ASSEMBLY, CARE AND USE
INSTRUCTIONS FOR
RCA3-PRO**

READ CAREFULLY



**IMPORTANT: RETAIN THESE
INSTRUCTIONS AND ATTACH RECEIPT
TO MANUAL FOR FUTURE REFERENCE.**



Questions, problems, missing parts?

Before returning to your retailer, call our customer service department at
1-866-235-5112, 8 a.m. - 5:00 p.m., CST, Monday - Friday.

www.arnorthamerica.com

TABLE OF CONTENTS

Safety Instructions	3-4
Included in the Box	5-6
Standard Replacement Parts	6
Assembly Instructions	7-10
Dimensions	11
Operating Instructions	12-16
Maintenance	17
Storing the Pressure Washer	18
Troubleshooting	19
Pump Parts	20-21
Unloader Parts	22-23
Pressure Washer Limited Warranty	24-25
Warranty Returns	25



Technical Specifications: 1,350 Max PSI | 3 Max GPM | 18 Amps
115V/208-230V 60Hz Motor | Brass Manifold | 5.5 Nozzle

Important Notice

Winterizing or long time storage: Drain all water out of pump. Flush pressure washer with a 50/50 mix of RV antifreeze and water. Relieve system pressure by squeezing gun trigger. When ready to use again, flush pressure washer with clean water to remove antifreeze.



WARNING: This product can expose you to chemicals including lead, DEHP, DINP which is known to the State of California to cause cancer and or lead to birth defects. For more information go to www.P65Warnings.ca.gov



PRECAUCIÓN: Este producto puede exponerle a los productos químicos incluyendo el plomo, DEHP, y DINP, que se saben al estado de California para causar el cáncer y/o defectos de nacimiento. Para más información, vaya a www.P65warnings.gov

SAFETY INSTRUCTIONS



Read and understand these instructions as they pertain to safety. Pay special attention to the safety symbol throughout this manual. Failure to comply with these instructions may result in personal injury or property damage. DO NOT allow children to operate or play on or around this equipment.



1. **WARNING:** Improper grounding can result in electrical shock. The power outlet must be 3-prong, properly grounded, and rated for 20 Amps or greater with a Ground Fault Circuit Interrupter (GCFI).
2. **WARNING:** High pressure spray can be extremely dangerous. Always point the nozzle away from people and animals.
3. **WARNING:** Always turn the power switch on the Pump Unit to the "Off" (O) position when not in use.
4. Seek emergency medical assistance immediately if any fluid penetrates the skin. The cut may be deeper and more serious than it appears.
5. Always wear eye protection and appropriate clothing when operating the unit.
6. Never spray any part of this pressure washer or any other electrical machine.
7. Do not alter the machine from the manufacturer's design.
8. Keep all safety devices active on the machine.
9. Do not make alterations to the unloader relief valve.
10. Never operate the unit with broken or missing parts.
11. Never use an undersized discharge nozzle.
12. Keep the pressure hose connected to the machine and wand while unit is pressurized.
13. Never leave the wand unattended while the machine is running.
14. Do not secure the wand in the squeezed "ON" position.
15. Follow the chemical manufacturer's recommendations when using chemicals in the soap injector.
16. Understand all safety precautions and first aid for chemicals being used.

SAFETY INSTRUCTIONS



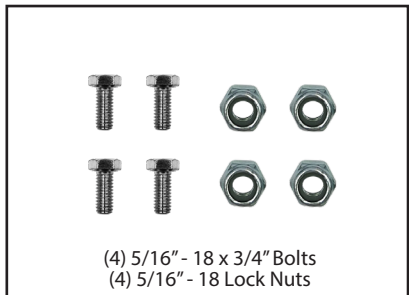
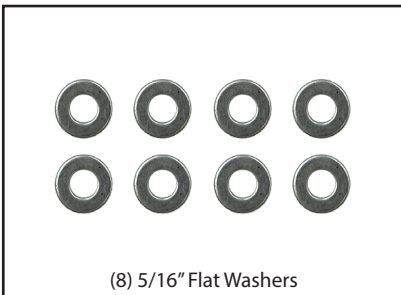
16. Never spray flammable liquids.
17. Do not operate this machine in or around an explosive environment.
18. Position the machine in an area that is protected from external damage.
19. Always place the machine on a level surface.
20. Do not move the unit by pulling on the hose or electrical cord.
21. Never use the unit when under the influence of drugs, alcohol, or medication.
22. No smoking while operating the machine.
23. Only operate the machine with sufficient water supply to the pump.
24. Always use water that is clear and free from particles.
25. Always check and maintain proper oil levels described in the Maintenance section on pg. 17 of this manual.
26. Protect your machine from damage due to freezing during storage. Follow the winterizing instructions in the Storing the Pressure Washer section on pg. 18 of this manual.
27. Always follow all other guidelines and Safety Instructions described on pg. 3-4 of this manual.



Tighten all connections and replace worn parts before starting the machine. Sudden release of high pressure streams may result if connections detach during use. This can cause serious injury. Never disconnect any part of the unit while the machine is running or before relieving system pressure, it is dangerous. Seek medical attention if an injury ever occurs.

INCLUDED IN THE BOX

Box Weight: ~130lbs | Box Dimensions: 29" L x 22-1/2" W x 23" H



INCLUDED IN THE BOX



(4) Casters



9/16" Open End Wrench



(8) 3/8" Flat Washers



(4) 3/8" - 16 Lock Nuts
(2) Tubular Frame Caps

STANDARD REPLACEMENT PARTS

MOD	DESCRIPTION
-----	-------------

RCA3 Pro Kit

RCA3-PRO RCA Motor/Pump w/ Frame

Standard Accessories

PWMV925N-PRO Trigger Gun with QC Adapters

PW646201121 50' Uber Flex High Pressure Hose

SF40-27-PRO 27" Lance 1/4 M BSP x 1/4 M BS with Nozzle Holder

PWNZMQC4P-055 4 Pack of Nozzles - 0°(SS), 15°(SS), 25° (SS), 40° (SS)

PW5701 50' Hose Reel

PWPF22.1.7 34 oz. Foam Cannon with Detergent Adjustment Knob

CW38-15-KIT 4 Pack of Casters

ASSEMBLY

REQUIRED TOOLS FOR ASSEMBLY

- 9/16" Open End Wrench (supplied)
- 9/16" Socket and Ratchet (not supplied)

CASTER ASSEMBLY

Remove all cart components from the box. Gather necessary tools and parts for assembly listed above.



1. Install (1) 3/8" flat washer on to the castor stem and insert through the corner hole in the cart frame from underneath.



2. Install (1) 3/8" flat washer and (1) 3/8" lock nut on top of castor stem. Tighten lock nut using 9/16" open end wrench (provided) and 9/16" socket and ratchet (not provided).



3. Repeat steps #2 and #3 on remaining cart frame corners.



4. Install (2) tubular frame caps by pushing into place in (2) cart corners.

ASSEMBLY

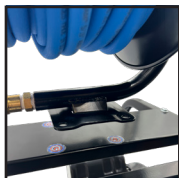
REQUIRED TOOLS FOR ASSEMBLY (NOT SUPPLIED)

- 1/2" Wrench
- 1/2" Socket

RCA3-PRO ASSEMBLY

Remove all cart components from the box. Gather necessary tools and parts for assembly listed above.

*For ease of assembly, Cart Base/Pump and Cart Top/Reel have been pre-assembled.

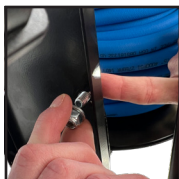


1. Position the hose reel assembly on top of the cart over the mounting holes that have stickers over them.

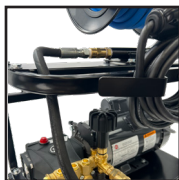
Note: You will see additional mounting holes that do not have stickers over them. **Do not use these holes to mount.**



2. Insert (4) mounting bolts and (4) washers through the mounting holes/stickers.



3. Install (4) washers and (4) lock nuts on the bolt ends underneath. Using the 1/2" wrench and socket, tighten the nuts to secure the hose reel assembly to the frame.



4. Route the hose reel jumper hose through the cart frame into position for the quick connect fittings to align.

ASSEMBLY



4. Secure the quick connect fittings together, locking in place.

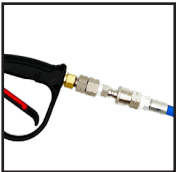
GUN ASSEMBLY



1. Assemble the gun by attaching the wand to the gun outlet by pulling back the collar of the quick connect.



2. Choose one of the included #5.5 nozzles and attach to the end of the wand.



3. Attach blue hose to inlet of gun by pulling back the collar of the quick connect.



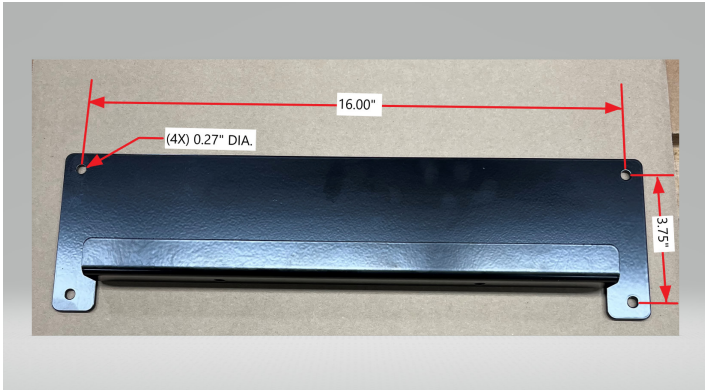
4. Once all parts are assembled, connect water supply using a standard non-collapsible garden hose.

Connect to garden hose adapter on Pump Unit.

Your pressure washer is now ready to use. It is important to read through your instruction manual on proper use of your machine.

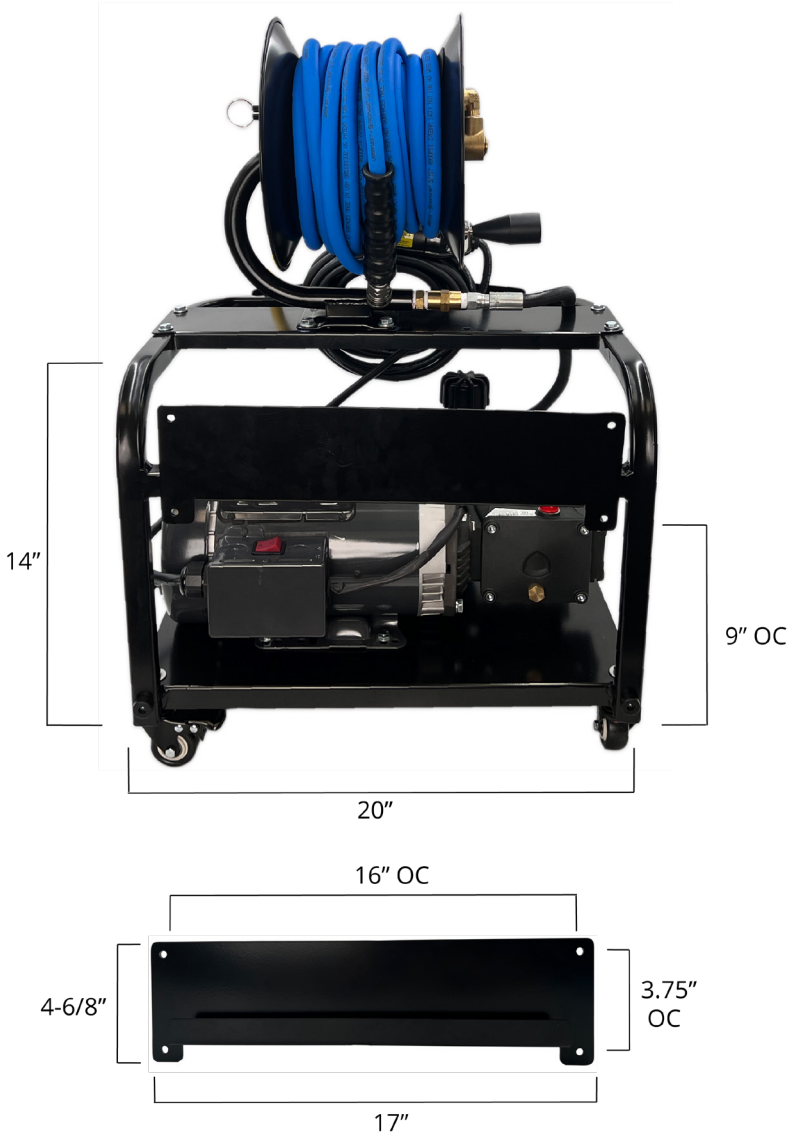
ASSEMBLY

OPTIONAL: WALL MOUNT ASSEMBLY (HARDWARE NOT INCLUDED)



1. Mounting hole locations and dimensions are detailed in photo above.
2. Bracket must be securely and properly anchored.
3. Mount bracket directly to wall studs, 16" on center, or concrete. It is NOT recommended to mount over sheetrock.
4. Only use fasteners and anchors rated to handle the shear and pullout load created by the weight of the RCA3-PRO cart.
5. Mounting hardware not included.

DIMENSIONS



OPERATING INSTRUCTIONS

BEFORE STARTING THE PRESSURE WASHER



1. Read all safety instructions throughout the manual.
2. Place unit on dry, firm ground for optimum lubrication of pump.
3. The pressure washer should be as close as possible to the water supply.



4. Tighten all hoses and connections. Check parts and replace if needed.
5. Check oil levels prior to each use. Oil should cover the indicator line on the dipstick.



6. To prevent damage and excessive hose wear, position the pressure washer so the hose does NOT extend across traffic areas. Make sure there are no kinks or twists in the hose.
7. Check to determine if the water supply to the pressure washer exceeds the output of the pump. The output of this unit is 3.0 gpm (gallons per minute), so the water supply must deliver at least 3.5 gpm.



Calculate gpm flow rate by running the water supply into a pail for one minute. Measure the gallons in the pail. If it is at least 3.5 gallons in the minute, your supply is adequate. Your water supply must be clean and free of debris. Use water with a temperature of less than 140°F.

Note: This unit is supplied with a “Total Stop System” (TSS) that allows the pump to run only when the gun trigger is squeezed. Releasing the trigger will temporarily stop the machine. Squeeze the trigger on the gun to restart the machine. Avoid rapidly squeezing and releasing the trigger to prevent damage to the TSS.

OPERATING INSTRUCTIONS

STARTING THE PRESSURE WASHER

1. Turn on water supply to pump inlet.
2. Plug the power cord into a properly grounded 20 Amp, 120 volt outlet. GFCI must be manually reset every time the powercord is plugged into recepticle. Green light will illuminate when reset.
3. Purge air from system by removing nozzle and squeezing gun trigger before starting machine. Let water run until there is a steady stream of water coming out of the nozzle.
4. Turn power switch on Pump Unit to "on" (I) position.
5. Squeeze trigger on gun to start machine.

DURING OPERATION



1. Position the unit so the operator has easy access to the pressure washer and its controls.
2. Do not use the pressure washer outdoors if it is raining, and do not spray the motor or any of its connections.
3. Do not use chemicals or agents which are not compatible with Buna-N, PVC (polyvinyl) or neoprene covering of the hose.
4. Do not use acids or caustic material with this unit. **Damage due to use with incompatible material will not be considered for warranty.**
5. Always test a small area to avoid possible damage to surfaces.

OPERATING INSTRUCTIONS

USING A FOAM CANNON

1. Mix preferred detergent with fresh, clean water in foam cannon bottle and shake contents thoroughly.
2. Ensure suction tube is in place in the foam cannon body, and screw the bottle into the body.
3. Connect foam cannon to end of wand by pulling back the collar on the quick connect, and foam away!
4. Foam cannon is adjustable. Spray pattern orientation and angle are determined by rotating the nozzle end. Detergent concentration is controlled by turning the adjustment knob on top of the foam cannon body.
5. When foaming is complete, remove the bottle from the body and squeeze trigger on spray gun to allow clean water through foam cannon.

OPERATING INSTRUCTIONS

CLEANING TIPS



Chemicals: Cleaning agents are most effective when the surface is rinsed first to loosen dirt. After pre-rinsing to loosen dirt, then clean with the detergent.

Detergent should be applied from the bottom to the top of the washing area. Apply detergent and allow the detergent to react with the dirt, then rinse from the top to the bottom. This detergent applying and rinsing technique will help to avoid streaks and skips in the washing area.

Never use more detergent than is necessary to clean the surface.

Always follow directions supplied by the detergent manufacturer on the container.

Cleaning: For best results, hold the nozzle 6 – 12" away from the washing surface and use long, slow deliberate side to side strokes, similar to using a paint sprayer. This technique will provide the most effective cleaning impact and minimize streaks and skips in the cleaning process.

Wax: If the pressure washer is used to apply wax, the gun should be held further from the surface to optimize the "misting" effect during application. For best results, follow the directions supplied by the wax manufacturer.

OPERATING INSTRUCTIONS

STOPPING PRESSURE WASHER

1. If the chemical/soap injector was used, rinse with clean water.
Note: Flush chemical line with new container and clean water until discharge is clear.
2. Turn Pump Unit power switch to the "Off" (O) position.
3. Turn off the water supply.
4. Squeeze the trigger on the wand to relieve the system water pressure and drain as much water as possible.
5. Follow this procedure each time the machine is stopped.



Note: *Squeezing the trigger on the gun when you restart the unit will reduce the startup load of the motor.*

Changing oil is one of the most important and least expensive maintenance items. It will prolong the life of your pressure washer. Change oil after first 50 hours of break-in period, and then every 200 hours or once per year. Demanding environments may require oil changes more frequently.

To change oil: Remove the 17mm oil drain plug on the bottom of the Pump Unit. Refill with 10 ounces of SAE20 or 30W Non-Detergent oil.



Winterizing or long time storage: Drain all water out of pump. Flush pressure washer with a 50/50 mix of RV antifreeze and water. Relieve system pressure by squeezing gun trigger. When ready to use again, flush pressure washer with clean water to remove antifreeze.

Note: See pg.16 “Storing the Pressure Washer”

ROUTINE CHECKS BEFORE EVERY USE

1. Check the water inlet screens for debris. Clean as needed using water and a toothbrush.
Note: Damage can occur if run without filter.
2. Check the nozzle for debris and signs of extensive wear. A worn nozzle will result in poor performance. **Only check the nozzle with the motor turned to the “Off” (O) position and the pressure relieved from the system!**
3. Check all fittings and connections for leaks and worn sealing areas. Replace worn components.

STORING THE PRESSURE WASHER



Severe damage could occur by water freezing inside the components. To prevent costly repairs, follow these steps:



1. Make sure the unit is "Off" (**O**), water supply is disconnected, and system pressure has been relieved by squeezing the trigger on the gun.

2. Install a suction hose from the pump inlet (garden hose fitting) into a gallon of NON-TOXIC RV anti-freeze. Following operating instructions start the machine and squeeze trigger on the spray gun allowing the pump to draw anti-freeze through the entire system. Once the anti-freeze appears at the end of the wand, turn the machine "Off" (**O**).



3. Squeeze gun trigger to relieve pressure from system. Disconnect the high pressure hose from the high pressure outlet and put the hose, gun/wand and owners manual in a secure place to prevent unauthorized people from using the machine.



4. When ready to use the pressure washer again, reinstall the high pressure hose and water supply hose. Turn the water on and squeeze the trigger on the gun to send water through the system. Dispose of the anti-freeze/water solution safely where it will not be harmful to the environment, people or animals.

TROUBLESHOOTING

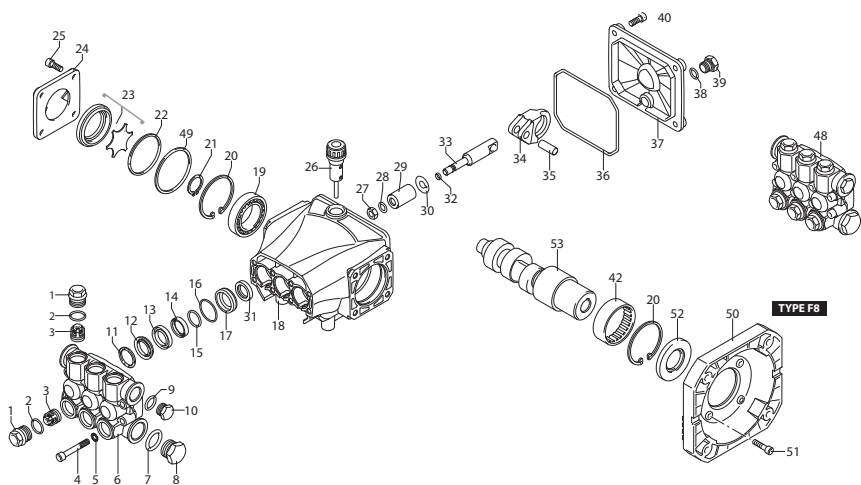
LOW PRESSURE

CAUSES	SOLUTIONS
Plugged Nozzle.	Clean and check for blockage.
Insufficient flow of water to the pump.	Increase water flow to the pump.
Plugged inlet screen.	Pull out and clean screen carefully.
Using restrictive supply hose.	Use larger diameter supply hose.
Debris in pump valves. Worn or damaged pump valves.	Remove valve caps. Inspect valves for debris, wear, or damage. Replace if needed. Torque valve caps to 300 in/lbs.

SURGING PRESSURE

CAUSES	SOLUTIONS
Restricted supply by under-sized fittings or inlet.	Use larger fittings and clean the inlet screen.
Insufficient flow of water to the pump.	Increase water flow to the pump.
Air trapped in the pump head.	Squeeze the gun trigger before starting the machine. Start the engine and run water until air is purged out of the system.
Debris in pump valves. Worn or damaged pump valves.	Remove valve caps. Inspect valves for debris, wear, or damage. Replace if needed. Torque valve caps to 216 in/lbs.

RCA3G25E-F8 PUMP

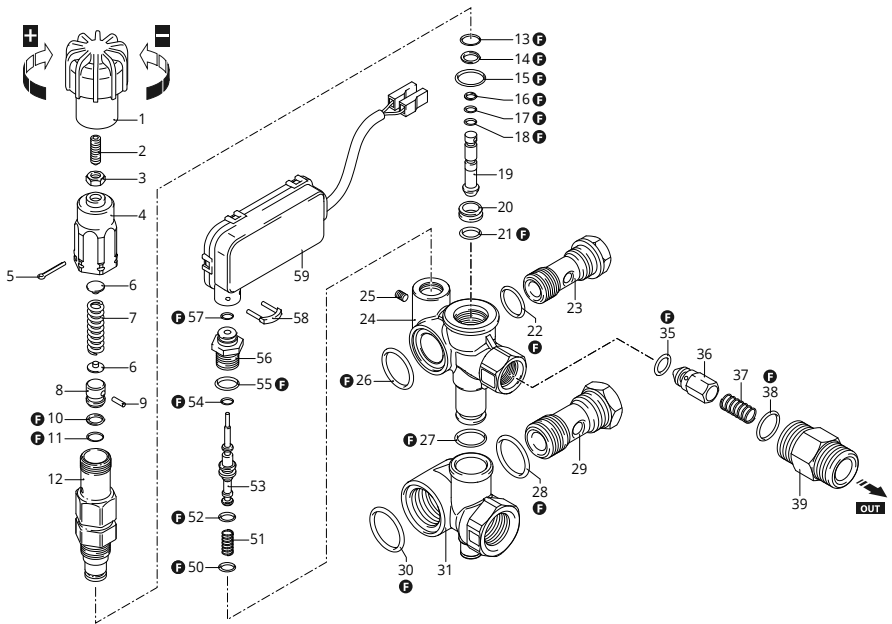


RCA3G25E-F8 PUMP PARTS

Pos.	Code	Description	Q
1	3200110	Valve Cap	6
2	1200690	O-Ring	6
3	2769050	Complete Valve	6
4	800410	Head Bolt	8
5	1381550	Lock Washer	8
6	3200020	Blank Head	1
7	180101	O-Ring	1
8	820361	Plug	1
9	740290	O-Ring	1
10	1989600	Plug	1
11	1780140	Support Ring	3
12	1780720	High Pressure Seal	3
13	3200130	Front Piston Guide	3
14	3200142	Low Pressure Seal	3
15	3200260	Fiber Ring	3
16	770260	O-Ring	3
17	3200120	Rear Piston Guide	3
18	3200010	Pump Body	1
19	1780490	Bearing	1
20	1260790	Retainer Ring	1
21	1780550	Retainer Ring	1
22	395081	O-Ring	1
23	3209615	Oil Indicator	1

Pos.	Code	Description	Q
24	3200070	Side Cover	1
25	1200430	Bolt	8
26	3201890	Oil Cap (Vented Dipstick)	1
27	1260110	Nut	3
28	1260100	Washer	3
29	1260210	Piston	3
30	1260091	Washer	3
31	1260460	Oil Seal	3
32	480480	O-Ring	3
33	3200060	Piston Rod	3
34	3200040	Connecting Rod	3
35	1780050	Connecting Rod Pin	3
36	2760280	O-Ring	1
37	3200030	Rear Cover	1
38	820510	O-Ring	1
39	880581	Plug	1
40	3200220	Bolt	4
42	1321190	Bearing	1
48	42948	Complete Pump Head	1
49	3201860	Ring	1
50	1584	F8 Flange	1
51	1200430	Bolt	4
52	480671	Shaft Oil Seal	1

AR25395 UNLOADER - MINIMATIC 4/B TSS



AR25395 UNLOADER PARTS - MINIMATIC 4/B TSS

Pos.	Code	Description	Q
1	2360760	Knob	1
2	392840	Screw	1
3	1980300	Nut	1
4	2500540	Insert	1
5	2500550	Split pin	1
6	1980220	Wobble plate	2
7	1271070	Spring	1
8	1080041	Piston	1
9	1080070	Pin	1
10	1080401	Ring	1
11	1080250	O-ring	1
12	1980210	Piston guide	1
13	740290	O-ring	1
14	800560	O-ring	1
15	880830	O-ring	1
16	1271170	Ring	1
17	1080190	O-ring	1
18	1080190	O-ring	1
19	1271160	Piston	1
20	1980200	Seat	1
21	1470210	O-ring	1
22	390080	O-ring	1
23	1540272	Screw	1

Pos.	Code	Description	Q
24	1540660	Valve body	1
25	1981190	Screw	1
26	1140450	O-ring	1
27	390080	O-ring	2
28	880270	O-ring	1
29	2260420	Screw	1
30	1540630	O-ring	1
31	1540280	Suction fitting	1
35	1460430	O-ring	1
36	1540170	Shutter	1
37	1080091	Spring	1
38	394280	O-ring	1
39	1540500	Fitting	1
50	1080192	O-ring	1
51	1981320	Spring	1
52	660191	O-ring	1
53	1540881	Piston	1
54	1080192	O-ring	1
55	880840	O-ring	1
56	1540870	Plug	1
57	1260820	O-ring	1
58	2022201	Fork	1
59	2029758	TSS box assembly	1
F	42451	Gasket kit	1

PRESSURE WASHER LIMITED WARRANTY

- ☑ **RCA3-PRO Electric Pressure Washers come with a 1 Year Commercial Warranty.**
- ☑ **RCA3-PRO Accessories come with a 90 Day Warranty.**
- ☑ **Warranty is to the original purchaser and is non-transferrable.**
- ☑ **Warranty Claim may require product inspection by the Manufacturer.**
(See Liability)

Warranty Conditions:

- **Warranty does not apply to normal wear** (such as but not limited to: seals/ packings, valves, plungers and sealing O-rings), freight damage, freezing damage.
- **Warranty does not apply to misuse** when pump or accessories are altered operated above recommended speeds, pressures, or temperatures.
- **Warranty does not apply to damage caused by aftermarket accessories** not included with original unit.
- **Warranty is void** when failure to follow recommended operating and maintenance procedures, or failure to use OEM replacement parts.
- **Warranty is void** when pump is damaged by:
 - 1) The use of caustic (corrosive) liquids
 - 2) Pump was operated under abrasive or corrosive environments where conditions could cause pump cavitation.

Liability of manufacturer:

- ☑ **Warranty is limited to repair or replacement of parts only.**
- ☑ **Warranty Products must be inspected by the manufacturer.**
- ☑ Returned Product will be Repaired or Replaced Free of Charge if found to be defective and subject to warranty.

After a completed inspection by the manufacturer, warranty is granted/ denied at the sole discretion of the manufacturer when such products are found to be of original defect or workmanship at the time it was shipped from factory.

This warranty is in lieu of all other warranties, expressed or implied, including any warranty of merchantability of any and all other obligations or liabilities on the part of the manufacturers or equipment.

PRESSURE WASHER LIMITED WARRANTY

Customer Return Liability:

- Pumps and Accessories must have a Return RMA#**
 - Pumps must be shipped back with Shipping plug**
 - Shipments without RMA# will be denied**
 - Under no circumstance will the manufacture bare any responsibility for loss of unit, loss of time or inconvenience in any manner.**
- **Customer is responsible for freight costs** to return product for warranty evaluation.
 - The nozzle(s) being used must be returned with the pump unit to be considered for warranty.
 - A shipping plug (supplied) must be installed in the pump before shipping to prevent oil seepage. *Failure to secure the plug will result in a maintenance charge.*
 - The manufacturer is not liable for freight damage, insurance, labor, or any consequential damages incurred as a result of defective product.
 - **If returned product is found non-warrantable**, associated repair costs and return freight are the responsibility of the customer.

WARRANTY RETURNS

Instructions:

- Have a Purchase receipt ready
- Contact us and receive an RMA# and Packing directions

Contact us:

- General Questions**
- Troubleshooting**
- RMA/ Warranty**

Call our toll-free number at 1-866-235-5112. Customer service is available M-F 8am to 5pm Central Standard Time (CST). A customer service representative will work with you to fix the problem.

NOTES

NOTES



NORTH [®]
AMERICA
When Quality Matters